

Providence R.I.
This plat accompanies
our report of this date

PROVIDENCE, R. I.
ENGINEER'S OFFICE
STREET LINE DEPT.

PLAT OF CHARLES STREET

FROM SMITH ST. TO RANDALL ST.

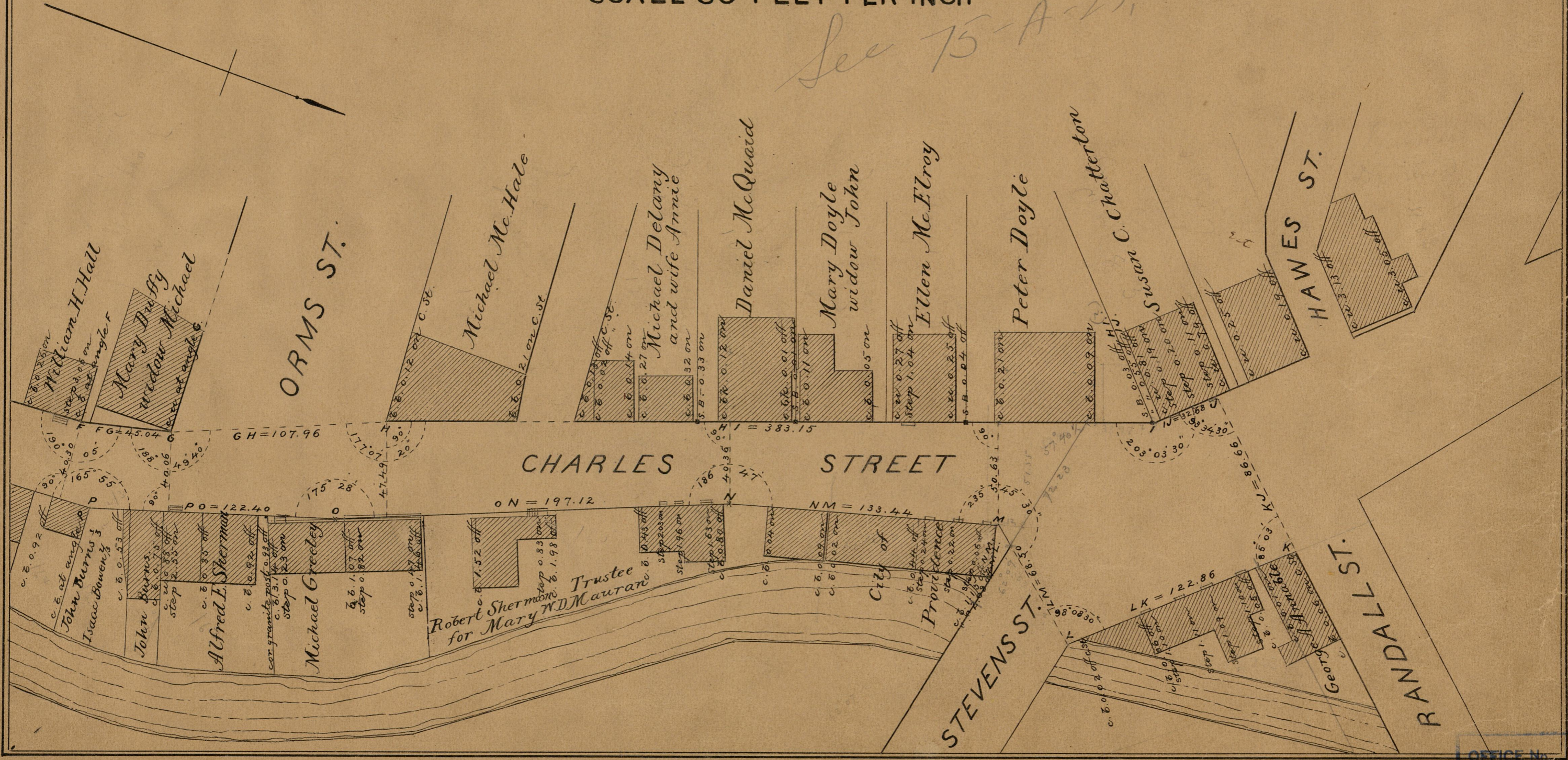
IN THREE SHEETS

SCALE 50 FEET PER INCH

Apr. 26, 1889

014970

See 75-A-23, 4



83
B-87

OFFICE No.	10017
DRAWER	83
SHEET	B-87